

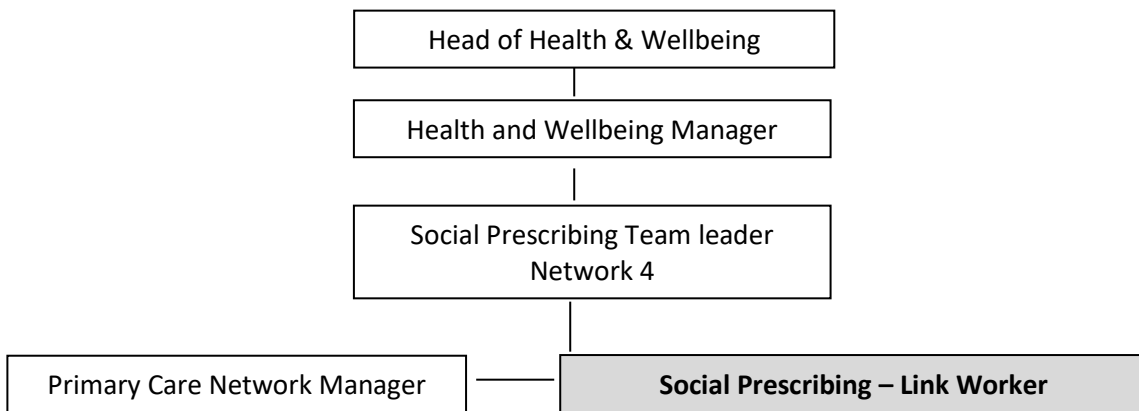


Job title	Social Prescribing – Link Worker	Department	Social Prescribing
Position reports	Social Prescribing Team Leader Network 4	Position is responsible for	N/A

Location:
Works across GP surgery, Patchway and Kingswood Offices with some home working

Main purpose of job:
Working closely with Primary Care Teams to enable individuals to find the support they need in their community to manage their health and wellbeing.

Position in Organisational Structure



Length of contract: Fixed term contract until end of March 2026	Salary: £26,603 per year Full time - 37 hours per week
--	--

Main duties

Link Workers give people time to talk about what matters to them and guide them to unpick complex issues affecting their health and wellbeing. They support people to find services and communities that will support or fulfil them. Link Workers will see people in their local GP practice and community venues and may also do home visits.

Working as part of a Multi-Disciplinary Team (MDT) in GP surgeries, Link Workers will:

- receive referrals from GPs
- support individuals for 4- 6 sessions (over 2-3 months)
- manage a caseload of approximately 35 people

Provide personalised support

- Using motivational interviewing and other techniques to establish the needs of the individual and provide personalised advice
- Support individuals to address barriers to accessing services or maintaining independence.
- Empower individuals to maximise their potential, producing action plans and facilitating follow-through.
- Accompany individuals to community groups, activities, and statutory services. Following up to ensure they are happy and supported, able to engage, included and receiving good support.
- Follow safeguarding protocols when needed.

Communication / Networking

- Develop and maintain good relations with practice teams, Southern Brooks teams, and external practitioners. Including participating in team meetings (including multi-disciplinary) and working alongside the wider Southern Brooks team.
- Positively promote the service to practice teams, external agencies, and relevant statutory bodies.
- Contributing to a 'joined up' approach to client action plans.
- Seek support from Manager/ Peers when there are gaps in knowledge or practice limitations.

Community Development

- Actively seek connections and build relationships between people and groups outside of Southern Brooks.
- Seek opportunities to link individuals to activities, supporting them to develop relationships and build their own social networks.
- Identify gaps in local provision based on the needs of individuals, including opportunities to establish new activities, groups, or introduce new funded projects. Inform the manager of these gaps and opportunities.

Information Resources

- Assist with community resource mapping exercises and share with wider teams in Southern Brooks.
- Maintain accurate case files and records in line with all operational procedures, and produce written reports if required.
- Produce case studies to evidence the impact of the service on an individual's wellbeing.

Last updated: May 2024

Date of next review: May 2025