

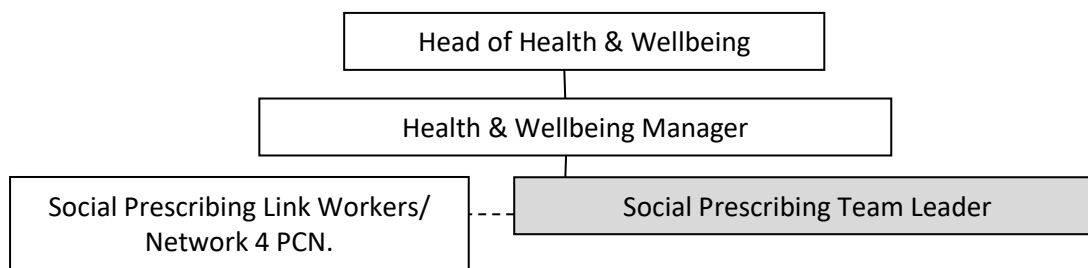


<b>Job title</b>	Social Prescribing Team Leader	<b>Department</b>	Health & Wellbeing
<b>Position reports</b>	Health & Wellbeing Manager	<b>Position is responsible for</b>	Social Prescribing Link Workers Network 4 PCN

**Location:**  
Kingswood office with time in GP Surgeries and working from home.  
Network 4 Primary Care Network (Kingswood, Pucklechurch, Downend, Emersons Green)

**Main purpose of job:** Team Leader for a small team of Social Prescribing Link Workers, with some casework.

**Position in Organisational Structure**



**Length of contract:** Permanent subject to funding

**Salary:** £28,841.24 per annum.  
Full time 37 hours per week.  
We will consider requests for flexible working

**Main duties**

Working closely with Primary Care Teams to enable individuals to find the support they need in their community to manage their health and wellbeing.

Link Workers give people time to talk about what matters to them and guide them to unpick complex issues affecting their health and wellbeing. They support people to find services and communities that will support or fulfil them. Link Workers will see people in their local GP practice and community venues and may also do home visits.

As a Team Leader you will lead a small team of Social Prescribing Link Workers within a Primary Care Network (PCN). You will support the Social Prescribing Manager in managing relationships with partners as well as holding a caseload.

#### **Team Leader**

- Provide line management and supervision to a small team of Social Prescribing Link Workers within Network 4 PCN.
- Support the induction of Network 4 Link Workers.
- Assist Link Workers in building relationships with GP surgeries to establish a social prescribing service within the surgery.
- Support Link Workers to build expertise, resilience, and confidence in themselves.
- Coach Link Workers to manage their caseloads
- Review the performance of individual Link Workers and the team against key performance indicators
- Ensure Link Workers risk assess cases and follow the appropriate safeguarding policies and procedures.
- Review ways of working to provide continuous improvement for the service across the PCN
- Collect and collate data to enable effective review of the service
- Identify when a person's needs are beyond the scope of the link worker role and refer to the appropriate service

#### **Working as part of a Multi-Disciplinary Team in GP surgeries, Link Workers will:**

- receive referrals from GPs
- support individuals for 4- 6 sessions (over 2-3 months)
- manage a caseload of around 10- 12 cases.

#### **Provide personalised support**

- Using motivational interviewing and other techniques to establish the needs of the individual and provide personalised advice.
- Support individuals to address barriers to accessing services or maintaining independence.
- Empower individuals to maximise their potential, producing action plans and facilitating follow-through.
- Accompany individuals to community groups, activities, and statutory services. Following up to ensure they are happy and supported, able to engage, included and receiving good support.
- Follow safeguarding protocols when needed.

#### **Communication / Networking**

- Develop and maintain good relations with GP practice teams, Southern Brooks teams, and external practitioners. Including participating in team meetings (including multi-disciplinary) and working alongside the wider Southern Brooks team.

- Positively promote the service to practice teams, external agencies, and relevant statutory bodies.
- Contributing to a 'joined up' approach to client action plans.
- Seek support from Manager/ Peers when there are gaps in knowledge or practice limitations.
- Actively seek connections and build relationships between people and groups outside of Southern Brooks.
- Seek opportunities to link individuals to activities, supporting them to develop relationships and build their own social networks.
- Identify gaps in local provision based on the needs of individuals, including opportunities to establish new activities, groups, or introduce new funded projects. Inform the manager of these gaps and opportunities.
- Assist with community resource mapping exercises and share with wider teams in Southern Brooks.
- Maintain accurate case files and records in line with all operational procedures and produce written reports if required.
- Produce case studies to evidence the impact of the service on an individual's wellbeing.

**Last updated:** August 2024

**Date of next review:** August 2025