

<b>Job title</b>	Head of Wellbeing and Health	<b>Department</b>	Wellbeing and Health
<b>Position reports</b>	CEO	<b>Position is responsible for</b>	Manager (Social Prescribing) Manager (HHH and PALWs) Manager (Welcome Home and Hospital Link) Senior MINT Administrator

**Location:** office base is Patchway with travel required around South Glos including GPs, **Southmead Hospital**, Kingswood office and some working from home.

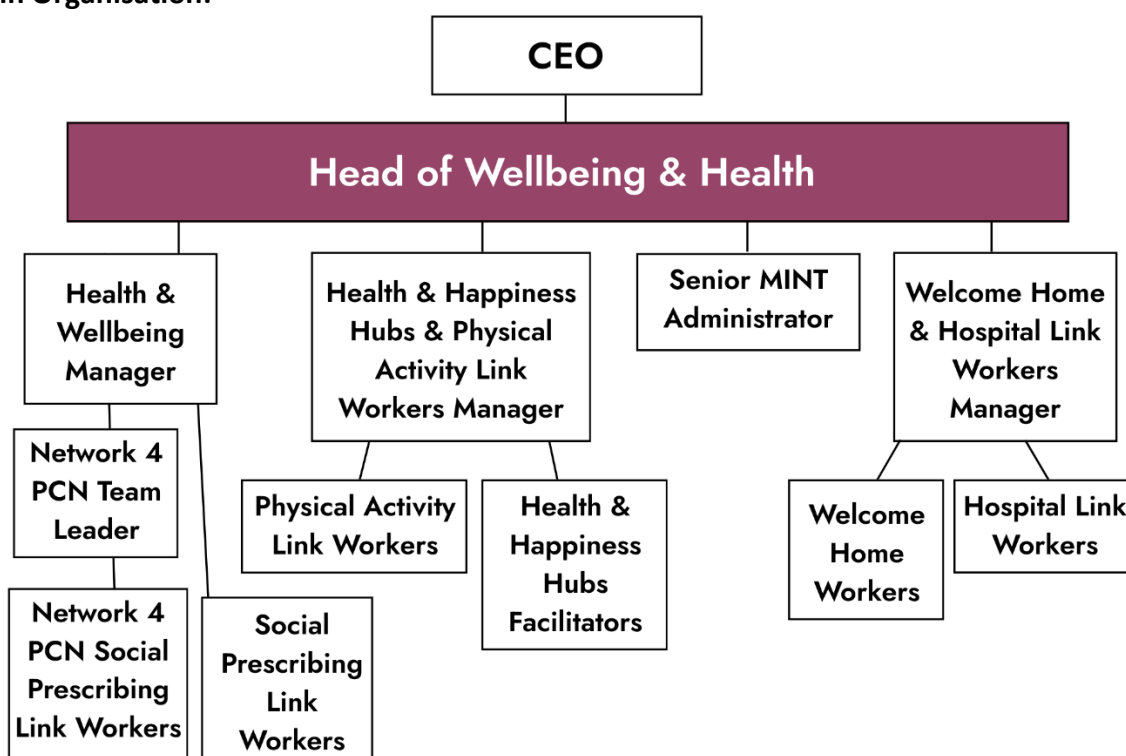
### Main purpose of job:

As the **Head of Wellbeing and Health**, you will play a pivotal strategic leadership role, championing wellbeing, health promotion, and the prevention of ill health across South Gloucestershire. As a senior member of the leadership team, you'll help shape a safe, sustainable, and well-run organisation that puts people and communities at the heart of everything it does.

You will bring deep knowledge and practical expertise in supporting wellbeing and promoting healthier lives, using these to lead a user-centred approach that empowers people to live well. Overseeing a portfolio of £900,000 in programmes delivered through 11 contracts, you will guide service delivery, contract performance, and ongoing development, supported by three experienced managers and working in close partnership with the CEO, Head of Finance, and the wider leadership team.

In this role, you'll cultivate strong partnerships across South Gloucestershire, building influential relationships with commissioners, community organisations, and system leaders to maximise impact. You will also contribute to income generation, organisational governance, and best practice, ensuring Southern Brooks continues to thrive as a trusted and effective force for community wellbeing.

### Position in Organisation:



<b>Length of contract:</b> Permanent	<b>Salary</b> £34,281 FTE 30 hours per week (must include Wednesday) £17.77ph, actual salary £27,795 pa
--------------------------------------	---

<b>Main duties</b>	
<p><b>1. Leadership &amp; Management</b></p> <ul style="list-style-type: none"> <li>• Lead for strategic goal 'Champion Wellbeing and Health in South Gloucestershire'</li> <li>• Oversee all Wellbeing and Health contracts and wider system representation of Southern Brooks and VCSE sector</li> <li>• Provide leadership for three management roles within the area of work and the Senior Administrator for Mental Health and Wellbeing Integrated Network Team (MINT)</li> <li>• Designated Safeguarding Lead across the organisation</li> <li>• Contribute to strategy, policy, planning and risk management as a member of the Senior Leadership Team and lead on Wellbeing and Health</li> </ul> <p><b>2. Service Development &amp; Quality</b></p> <ul style="list-style-type: none"> <li>• Develop areas of work to support the health and wellbeing of residents across South Gloucestershire</li> <li>• Develop and implement quality assurance and performance monitoring processes to ensure that all relevant KPIs and funded outcomes are achieved</li> <li>• Deliver the outcomes of health and wellbeing contracts and support strategic management of those relationships</li> <li>• Work with Head of Finance on annual budgeting and contract negotiations</li> </ul> <p><b>3. Partnerships &amp; Representation</b></p> <ul style="list-style-type: none"> <li>• Liaise with the Board of Trustees and deputise for the CEO in wellbeing and health and as required</li> <li>• Support the development of effective partnerships between the voluntary sector and local health commissioners and providers</li> <li>• Manage strategic relationships with health and wellbeing partners, including but not limited to: <ul style="list-style-type: none"> <li>○ Bristol, North Somerset and South Gloucestershire Integrated Care System (Gloucestershire Integrated Care System when that merges later this year)</li> <li>○ South Gloucestershire Council</li> <li>○ Primary Care Networks in South Gloucestershire</li> <li>○ Sirona Care and Health</li> <li>○ Avon and Wiltshire Mental Health Partnerships</li> <li>○ Partner VCSE organisations including Age UK South Glos, Second Step, DHI</li> </ul> </li> <li>• Contribute to the South Gloucestershire Locality Partnership and the Bristol, North Somerset and South Gloucestershire Integrated Care System, including as member of the Delivery Group</li> </ul> <p><b>4. Contract &amp; Performance Management</b></p> <ul style="list-style-type: none"> <li>• Lead on contract management for projects and act as the point of contact for commissioners and other funders for Wellbeing and Health</li> <li>• Prepare and submit timely and accurate monitoring reports to external funders and the Board as agreed with the CEO</li> </ul>	

**Last updated:** February 2026

**Date of next review:** February 2027