

Job title	Manager – Social Prescribing	Department	Wellbeing & Health
Position reports	Head of Wellbeing & Health	Position is responsible for	Social Prescribing Link Workers MINT Social Prescribing Link Worker Community Connector (DHI)

Location:

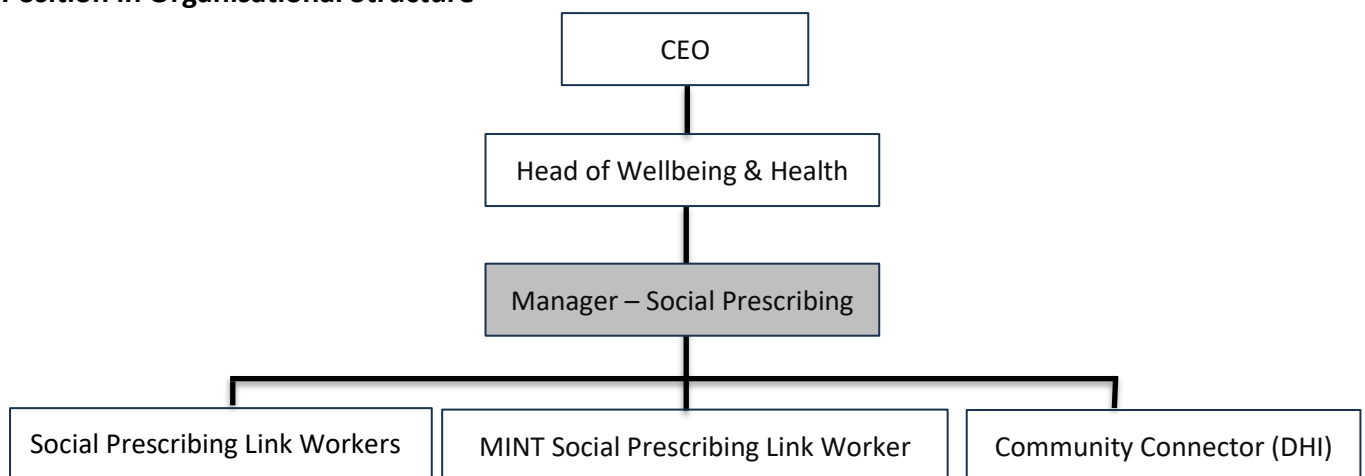
Main office base is Patchway with travel across South Gloucestershire including Southern Brooks offices in Kingswood and Patchway, and some working from home.

Main purpose of job:

In this role, you will lead a team who work with individuals using a person-centred approach to make sustainable changes in their lives. The work of the team includes confidence building, tackling wider determinants of health, and connecting individuals to resources in their community to improve their wellbeing and health. The main goal of these projects is to demonstrate the value of preventative, non-medicalised approaches to wellbeing and health. Projects include Social Prescribing based in GP surgeries, Social Prescribing based in the Mental Health & Wellbeing Integrated Network Team, and a Community Connector role based at DHI (South Glos Drug & Alcohol service). You will manage all aspects of these projects including budgets, staff, recording and monitoring, reporting, referral pathways, and stakeholder relations, as well as individual, team and service development. As part of the Management Team at Southern Brooks, you will contribute to a safe and well-run organisation that puts people and communities at the heart of everything it does. You will forge strong relationships with other teams within Southern Brooks, external partners and community organisations across South Gloucestershire to deliver effective support to the community and individuals.

You will bring knowledge and practical expertise in empowering people to lead healthier lives, caseload management, and project management, as well as the ability to manage individuals and support effective team working and service development.

Position in Organisational Structure



Length of contract: Permanent

Salary: £16.15 per hour
£31,157 FTE 37 hours per week
£25,262 pro rata for 30 hours per week

Main duties

Leadership

- Provide line management and supervision of employees in identified projects, including Social Prescribing Team Leader, Social Prescribing Link Workers and the DHI Community Connector.
- Contribute to delivery of the organisational strategy, policies, planning and risk management as a member of the Management Team.
- Set the vision for your team and support team and service development.
- Collaborate with your team annually to develop an Operational Plan that reflects the targets set for each project, the strategic goals for the organisation, and areas for development within each project.
- Deputise for Head of Wellbeing & Health where required.

Project management

- Manage all aspects of the Social Prescribing project based in primary care.
- Manage the Social Prescribing Link Worker in the MINT (Mental Health & Wellbeing Integrated Network Team) and ensure they are meeting targets.
- Manage all aspects of the Community Connector project based at DHI (Developing Health & Independence).
- Manage all projects to ensure outcomes and contract requirements are met
- Manage project budgets with support from senior managers
- Set up and implement effective referral pathways for projects
- Set up and implement robust recording and monitoring systems for projects, and ensure the team are recording in accurately.
- Prepare timely and accurate monitoring reports for projects
- Build and maintain internal relationships and external partnerships ensuring the team works effectively alongside other professionals
- Positively promote the projects to external stakeholders, delivering presentations, attending events, and developing promotional material.
- Identify and report on gaps in service provision and work collaboratively with wider Southern Brooks teams to fill those gaps where possible.

Last updated: February 2026

Date of next review: February 2027